

MAGALIA APARTMENTS

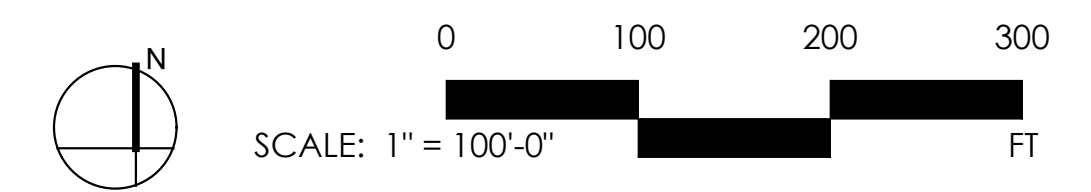
Magalia, CA

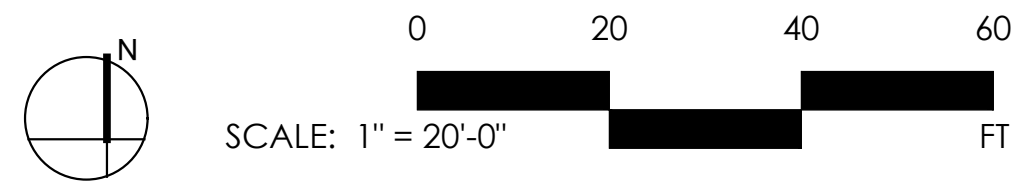
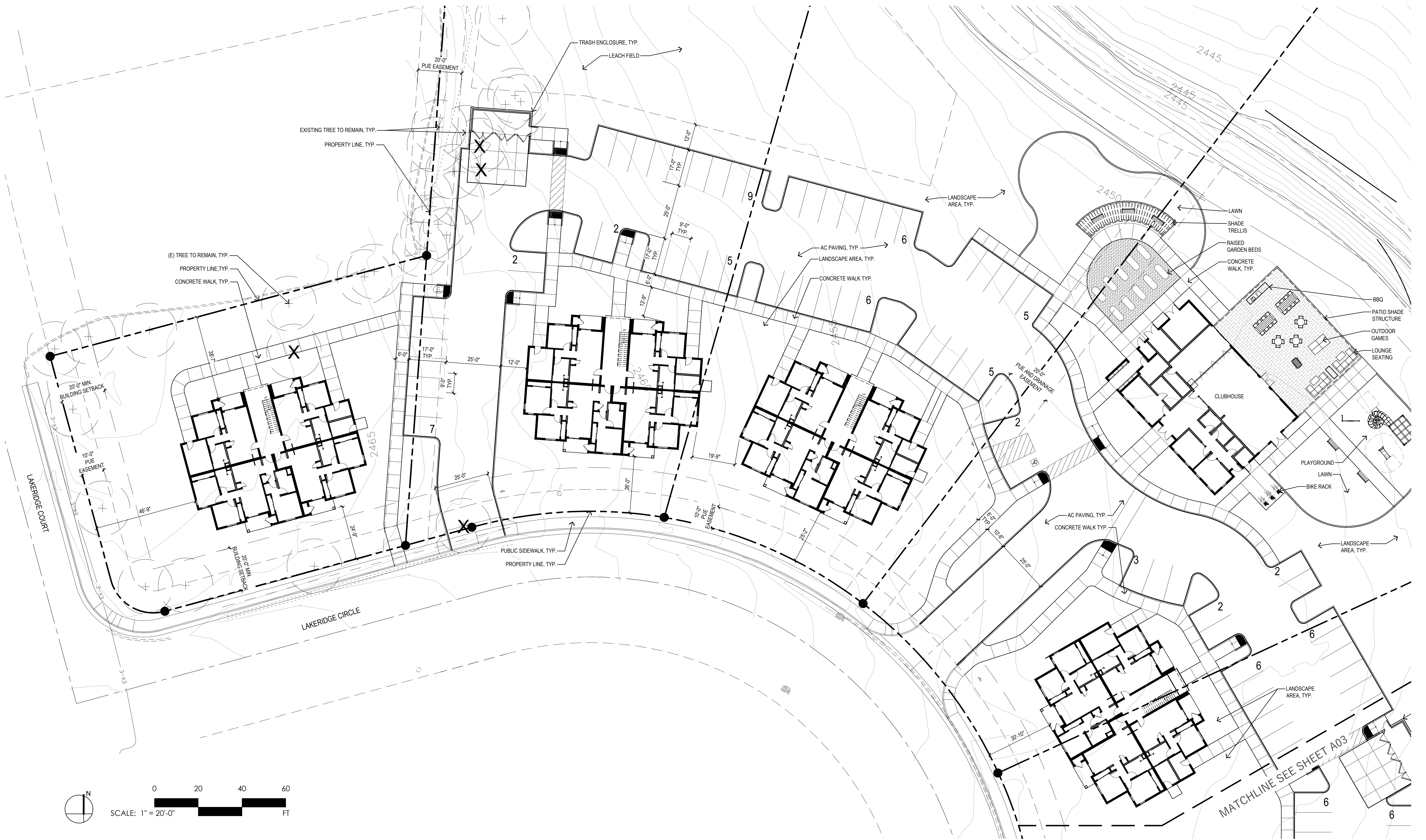
ENTITLEMENT PROGRESS SET

PROJECT NO. 1425-0001

October 18, 2022







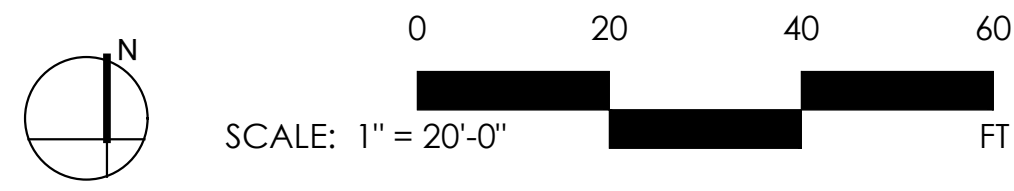
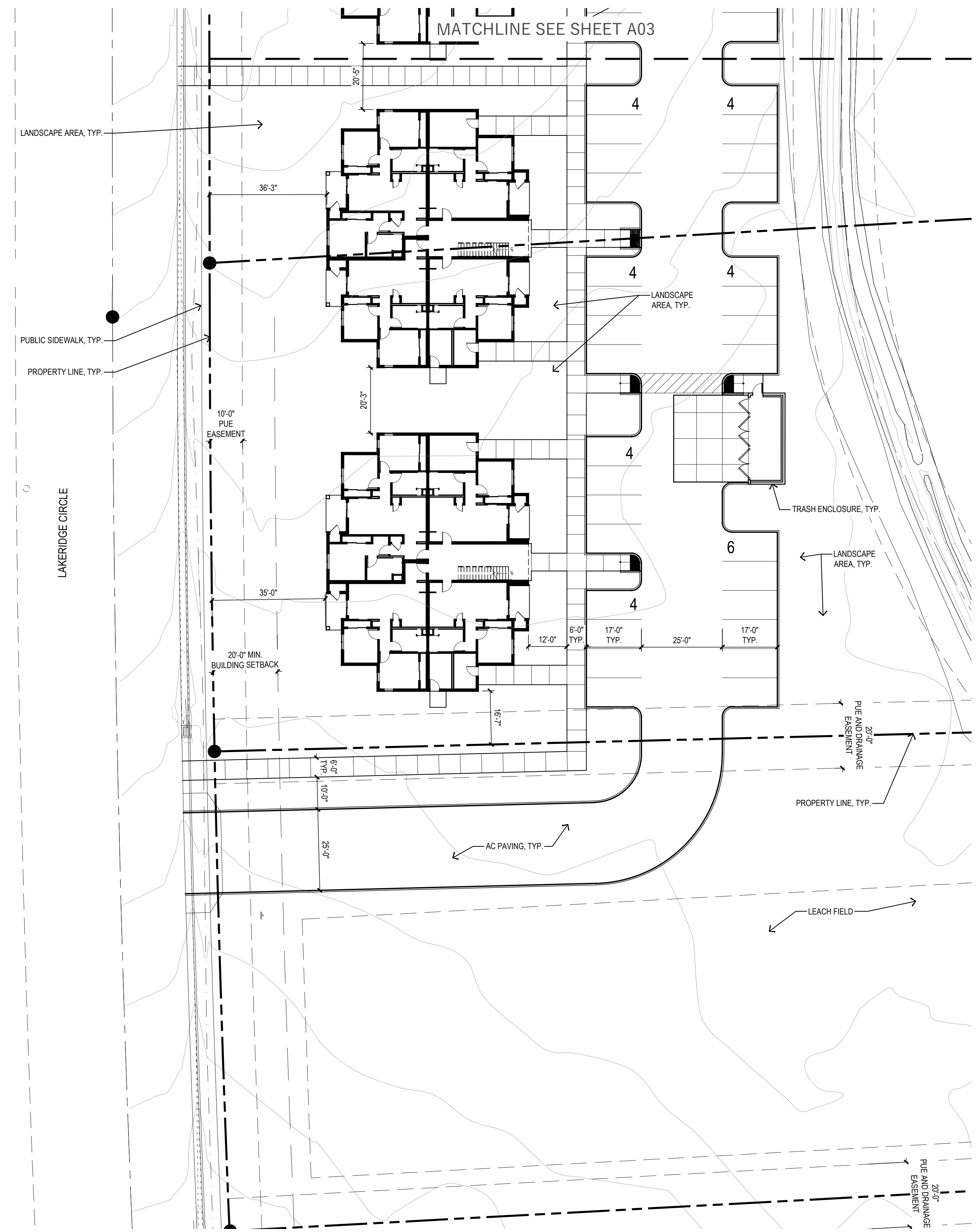
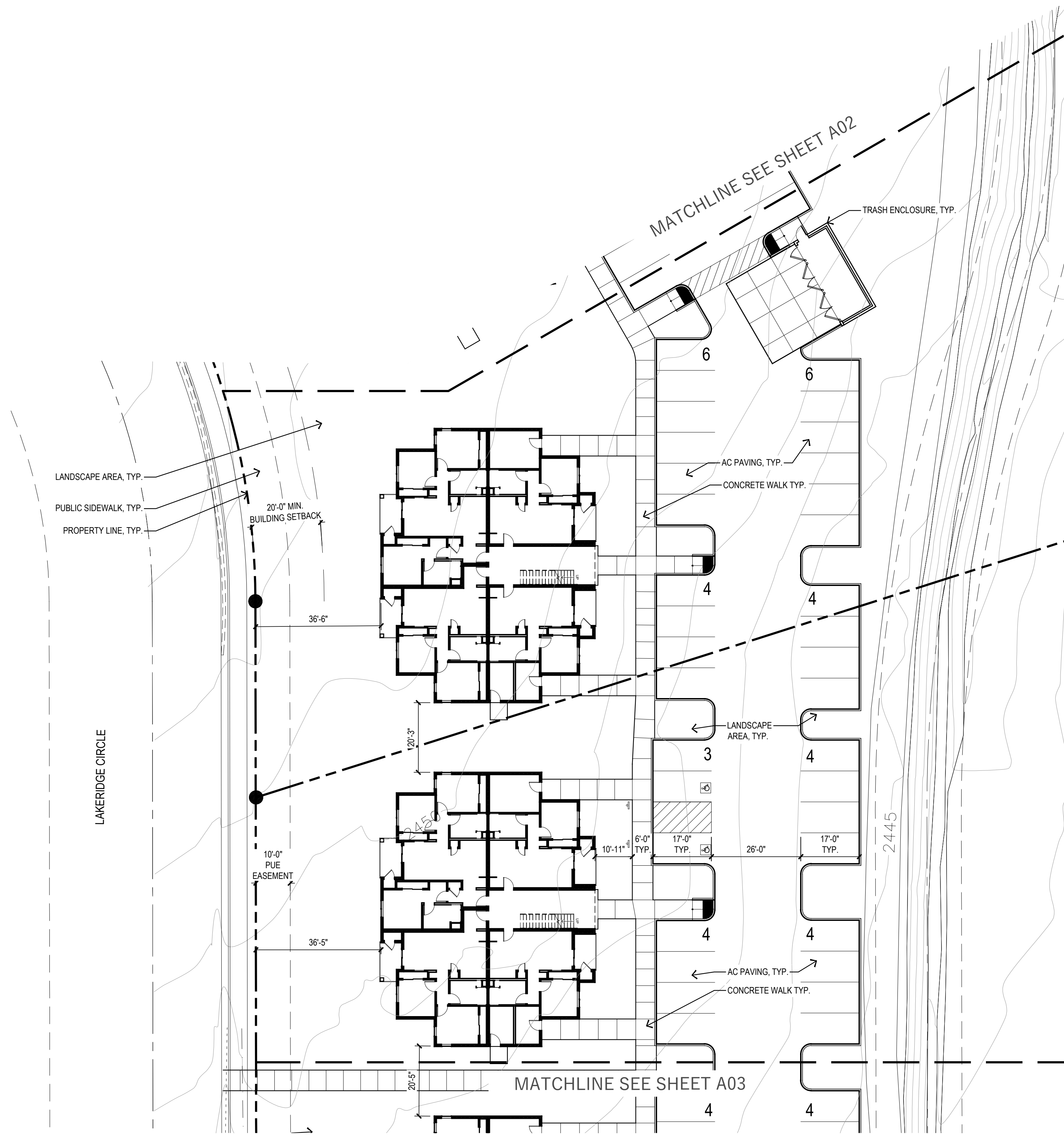
PARTIAL SITE PLAN

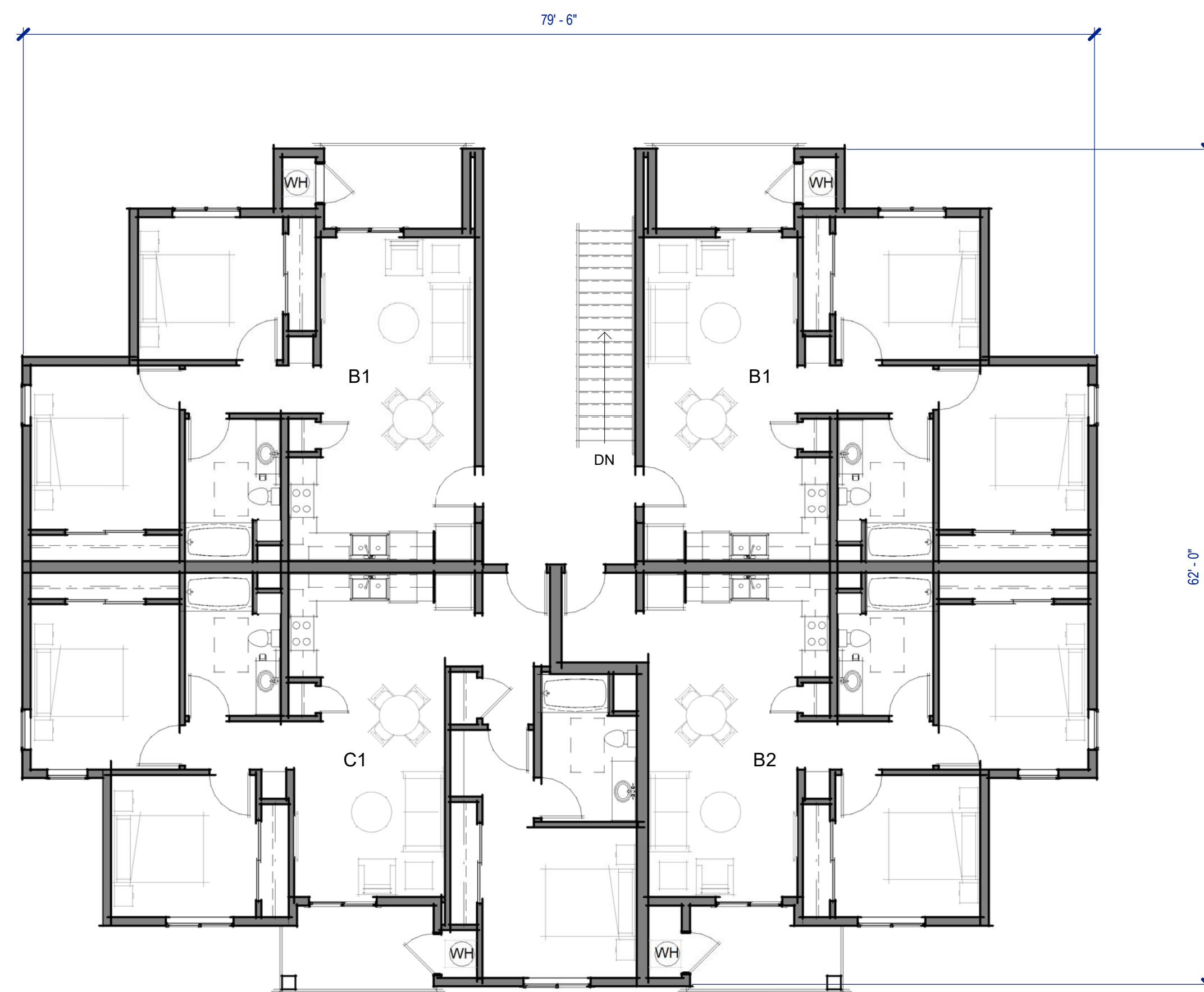
MAGALIA APARTMENTS | Magalia, CA

A.05

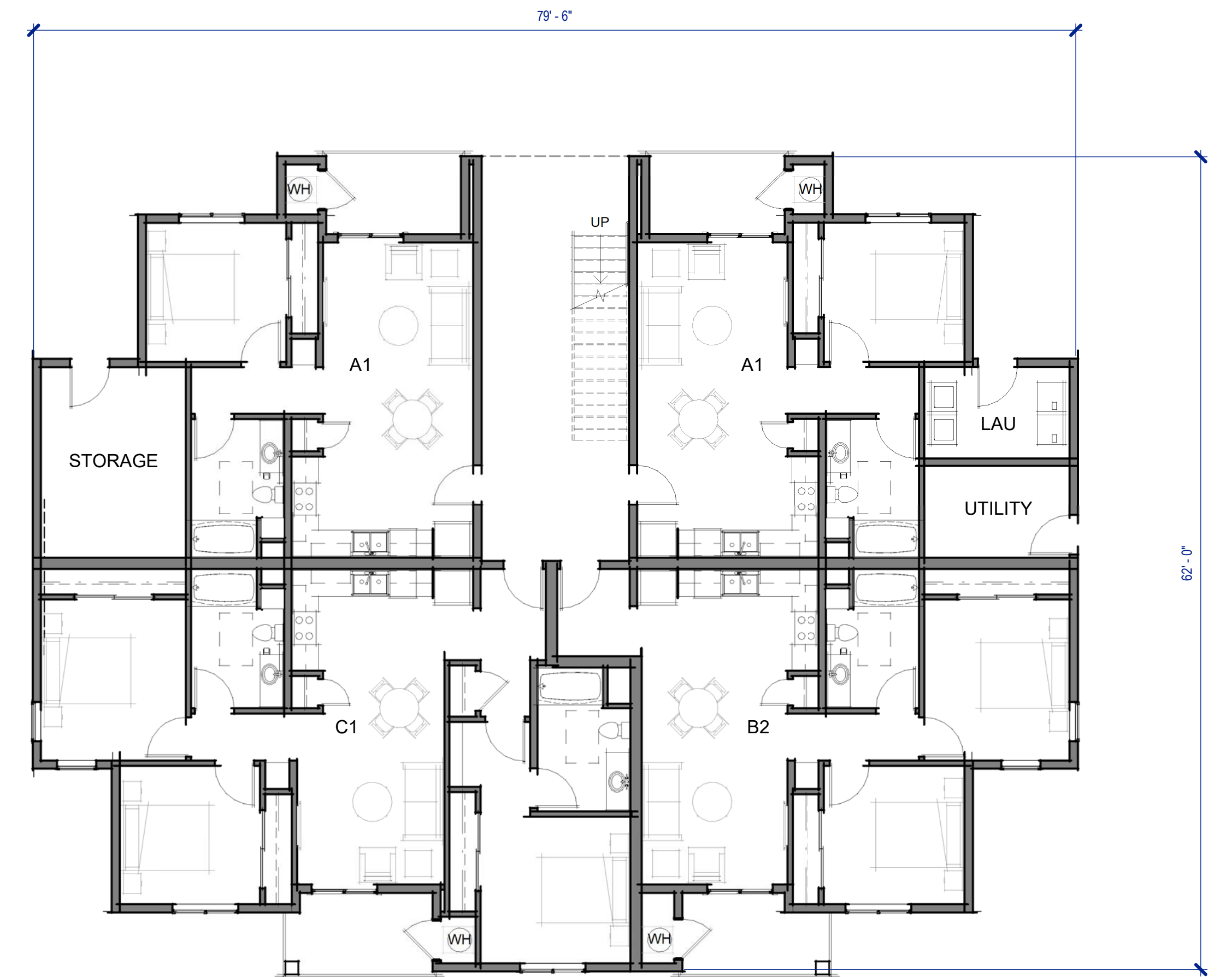
PROJECT NO. 1425-0001

October 03, 2022

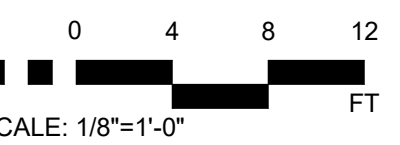


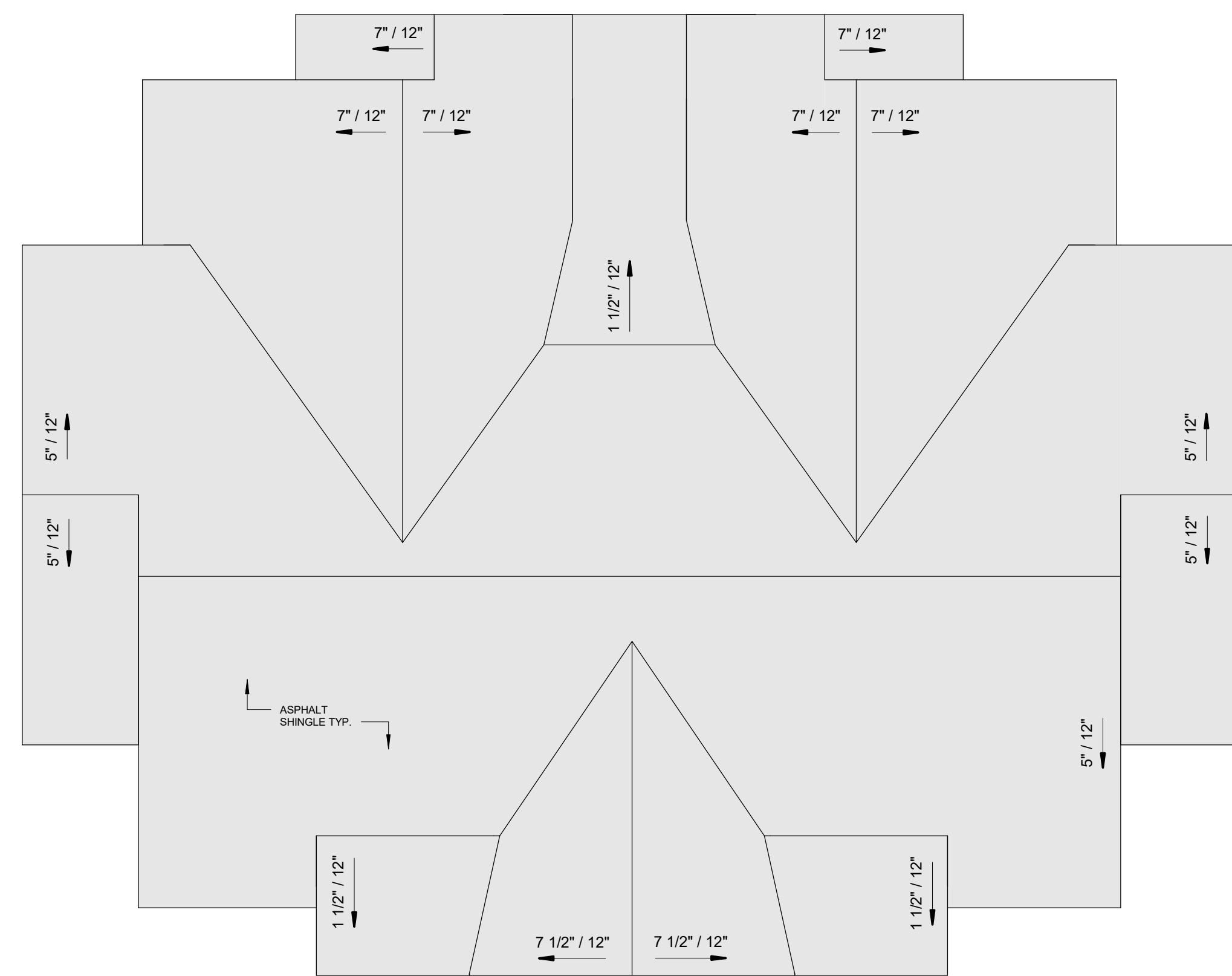


SECOND FLOOR PLAN | 2
1/8" = 1'-0"

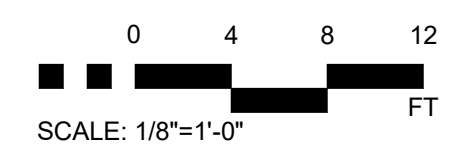


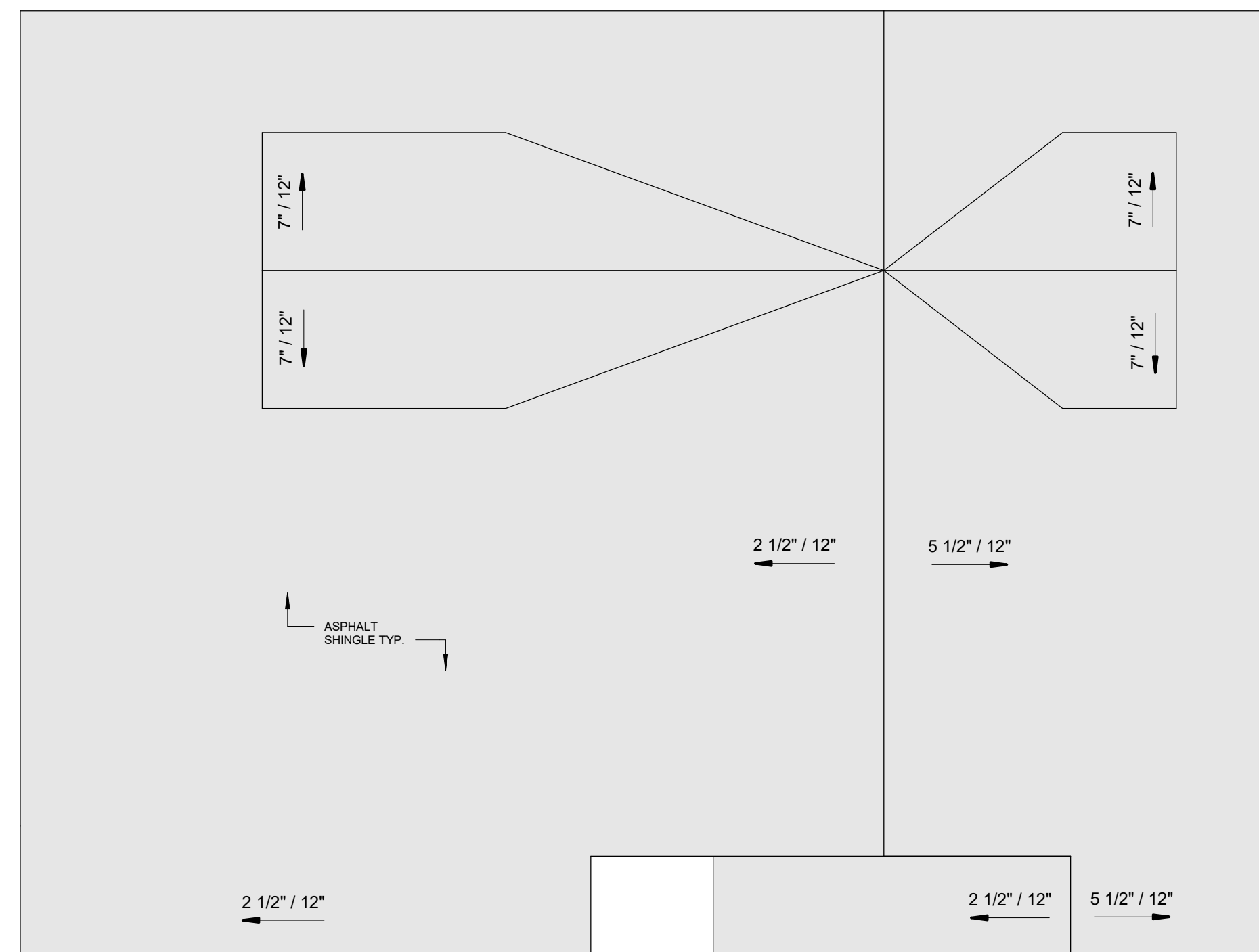
FIRST FLOOR PLAN | 1
1/8" = 1'-0"



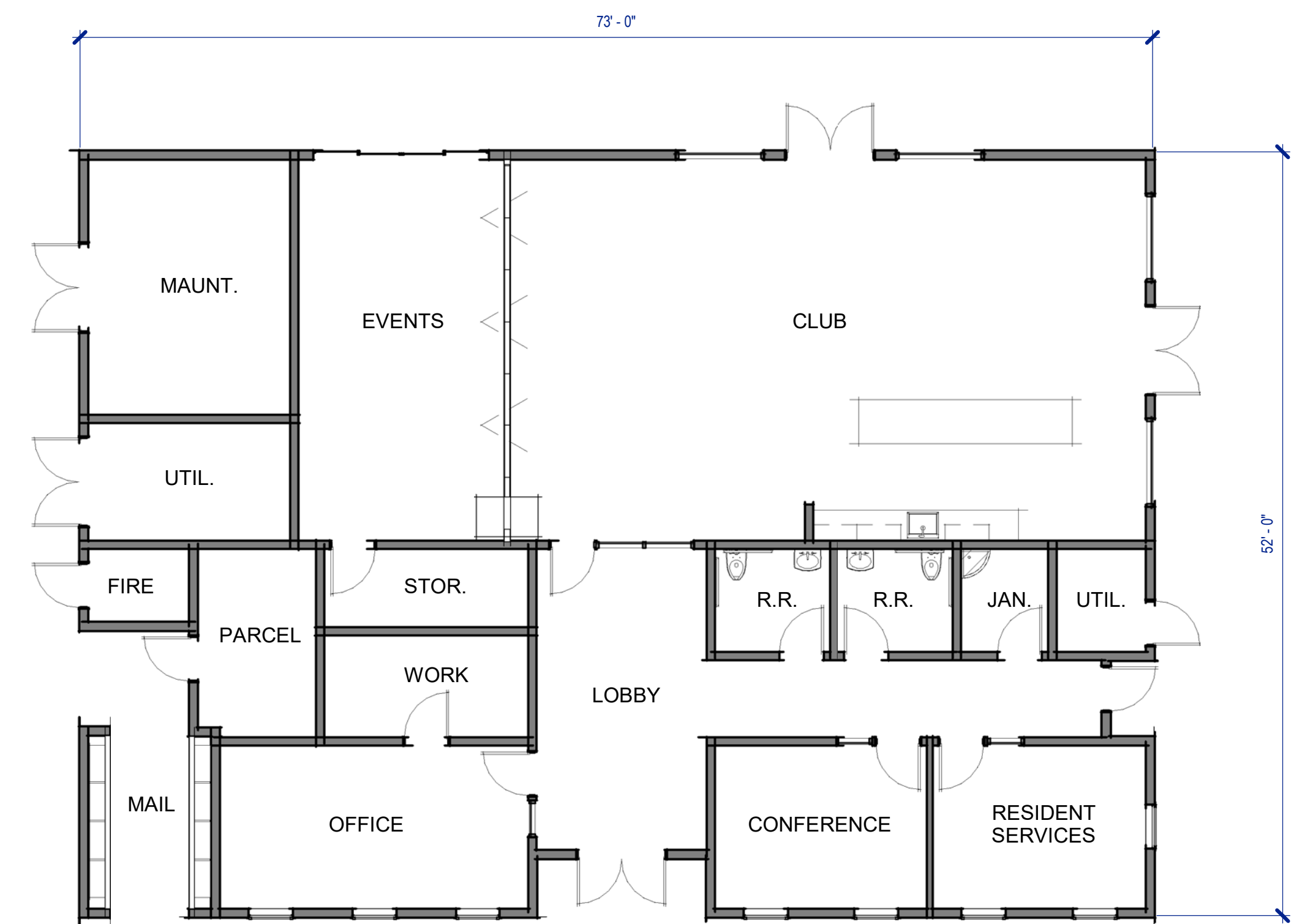


ROOF PLAN 1
1/8" = 1'-0"

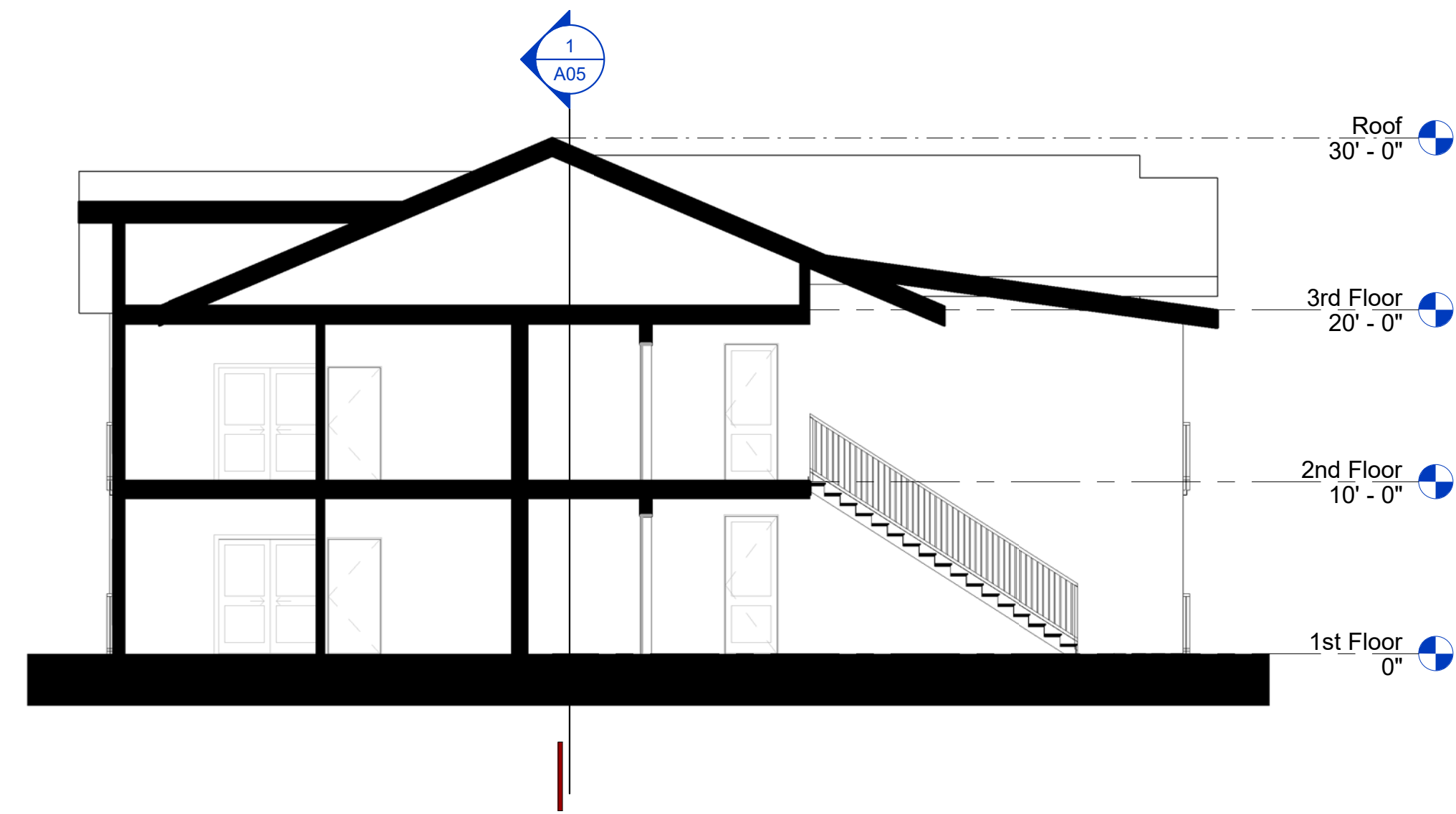




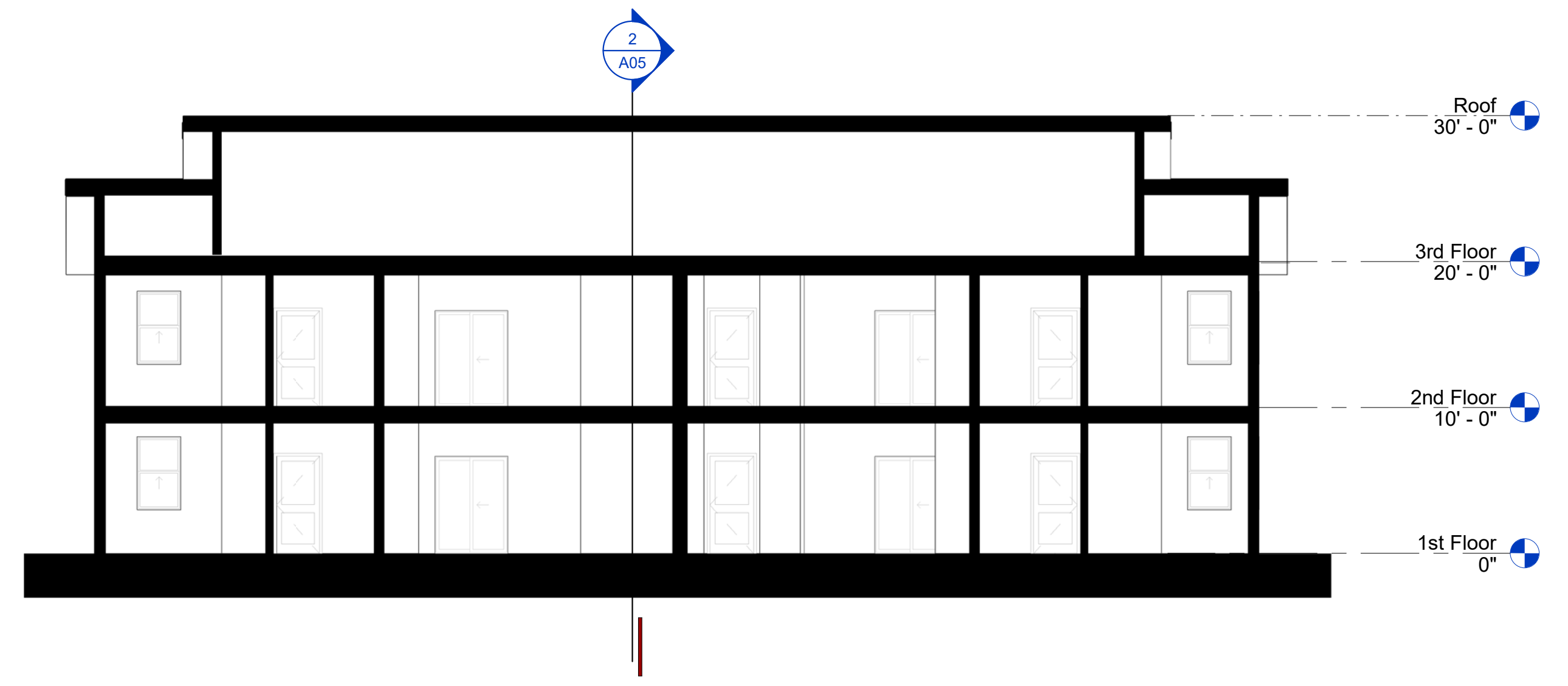
CLUBHOUSE ROOF PLAN | 2
1/8" = 1'-0"



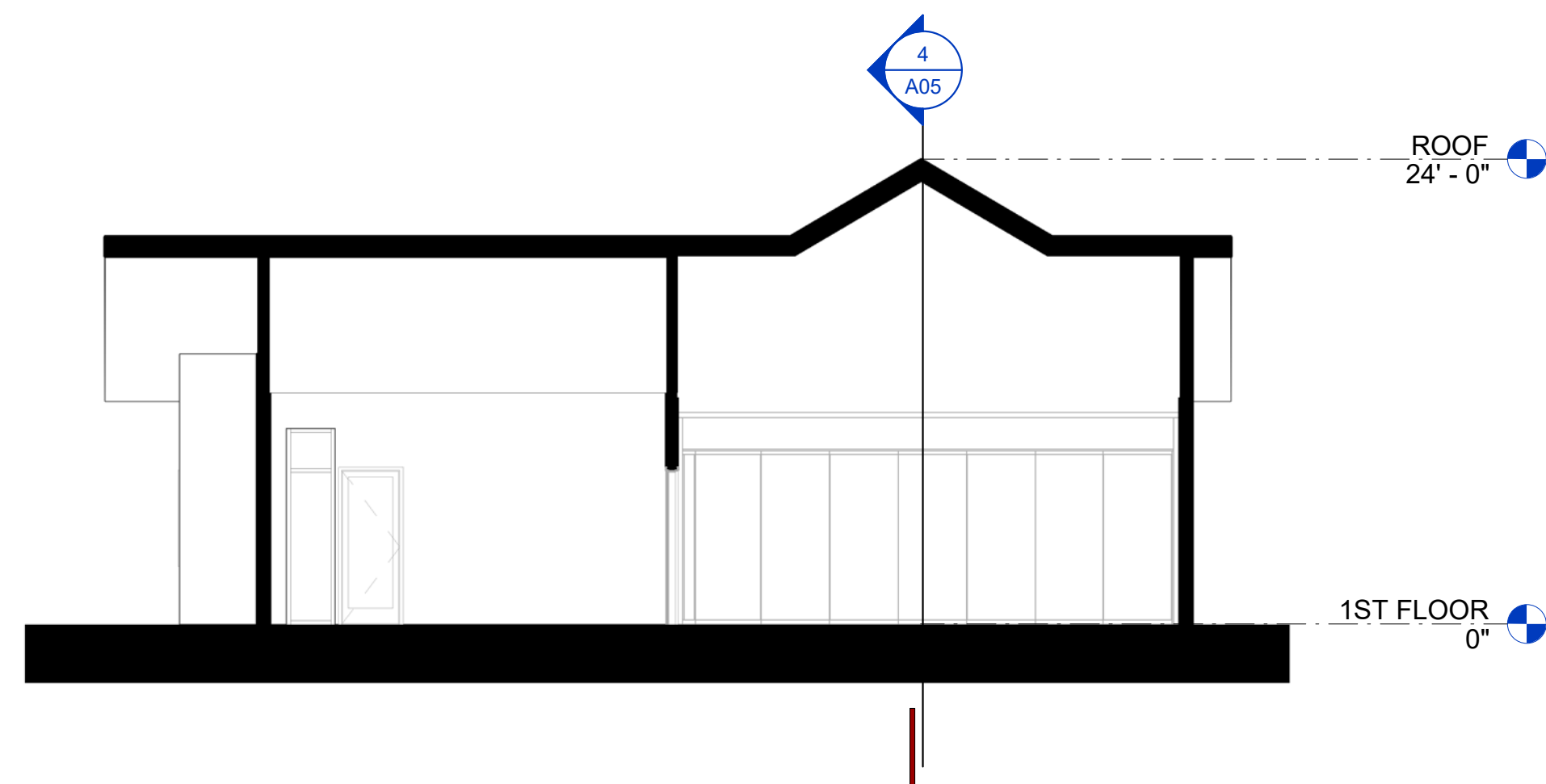
CLUBHOUSE FLOOR PLAN | 1
1/8" = 1'-0"



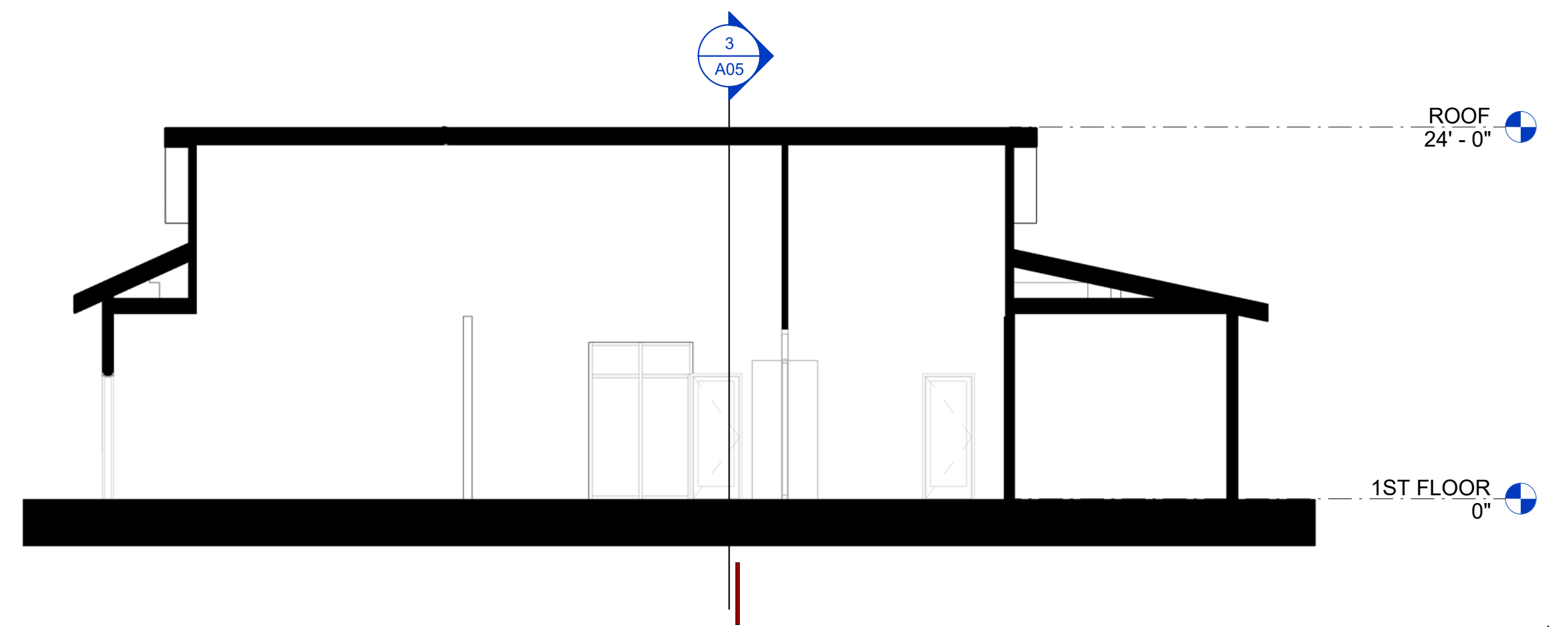
Section 2
1/8" = 1'-0"



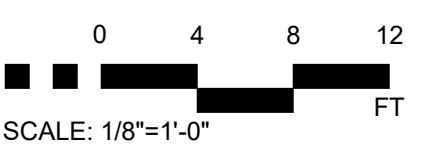
Section 1
1/8" = 1'-0"



Section 3
1/8" = 1'-0"



Section 4
1/8" = 1'-0"





1. CEMENT PLASTER - BEIGE



2. CEMENT PLASTER - DARK GREY



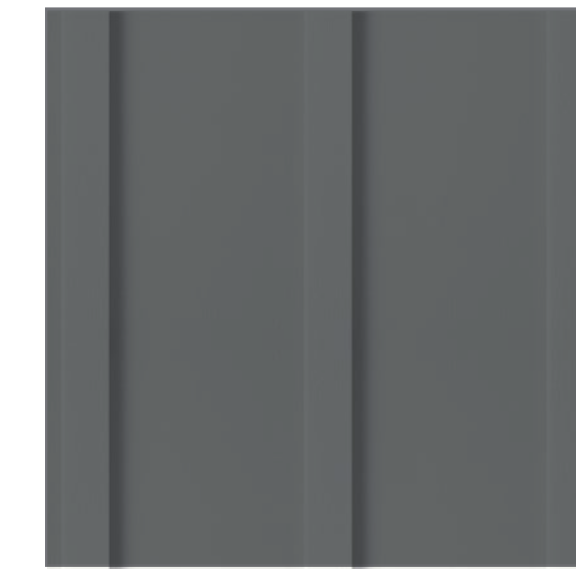
3. CEMENT PLASTER - SLATE GREY



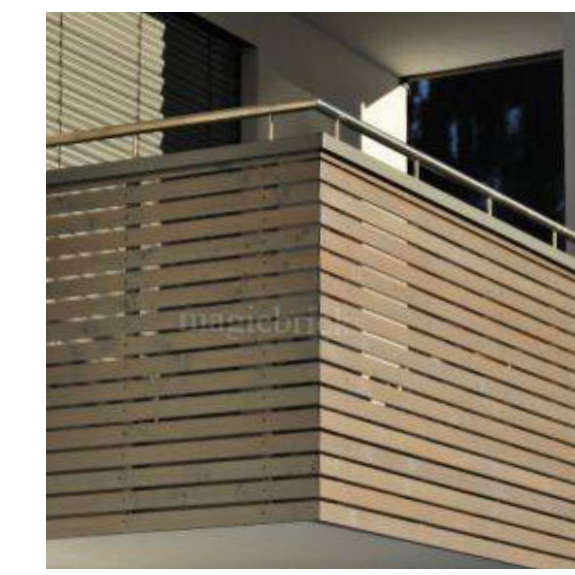
4. BEIGE BOARD & BATTEN



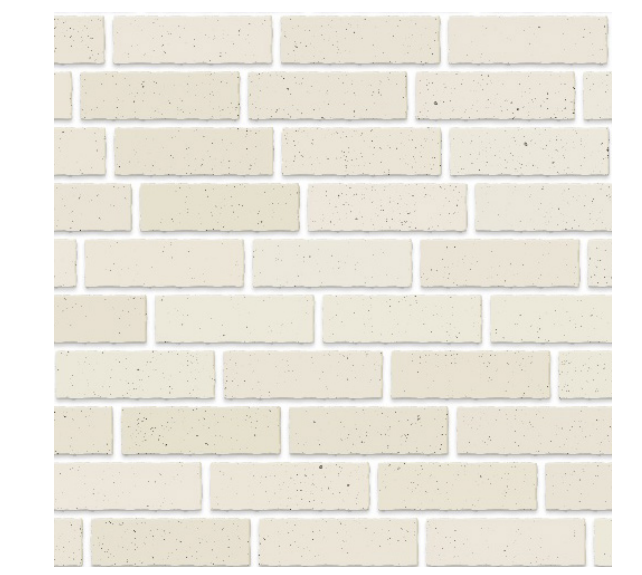
5. SLATE GREY BOARD & BATTEN



6. DARK GREY BOARD & BATTEN



7. FACE-MOUNTED PAINTED LOUVRE RAILINGS

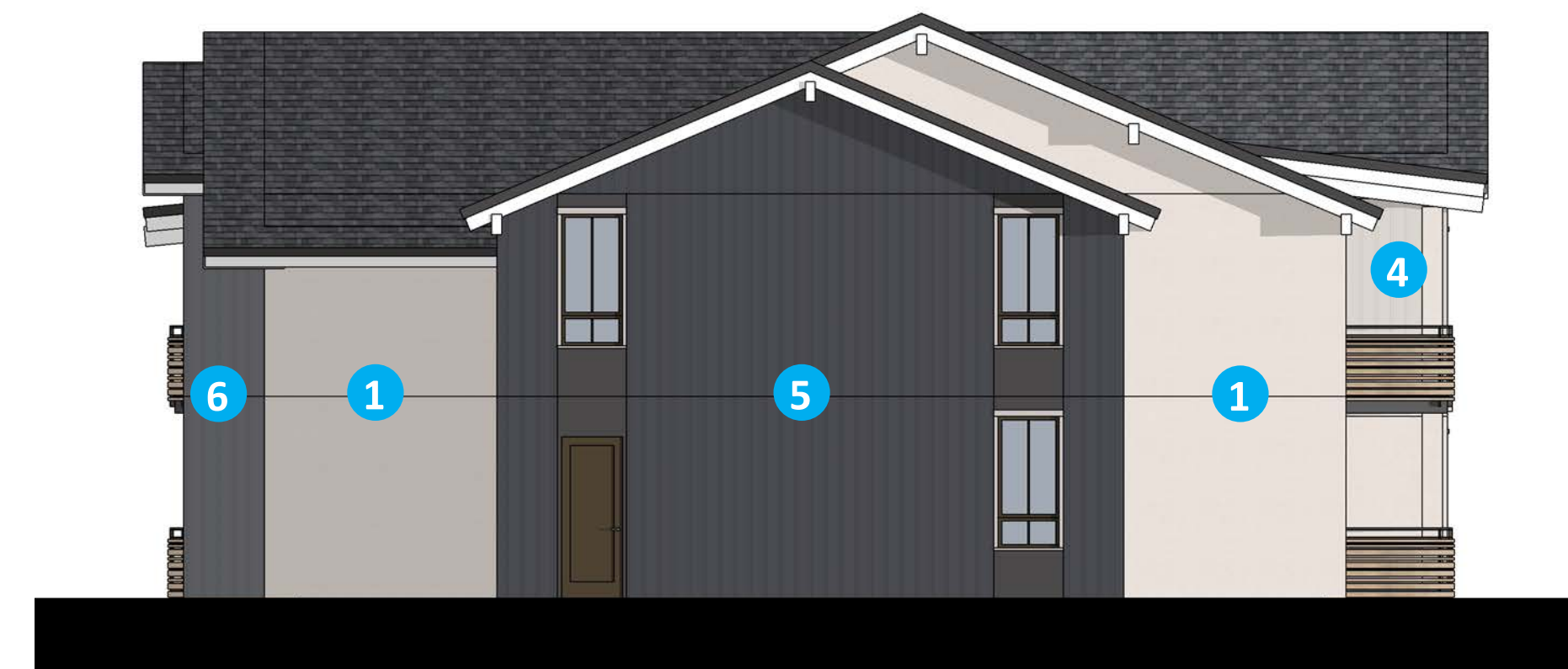


8. BEIGE BRICK RUNNING BOND

WHITE VINYL WINDOWS TYP.



4. FRONT ELEVATION



2. SIDE ELEVATION

TO ROOF 28'-0"

TO PLATE 22'-0"

2ND FLOOR 10'-6"

1ST FLOOR 0'-0"



3. BACK ELEVATION



1. SIDE ELEVATION

TO ROOF 28'-0"

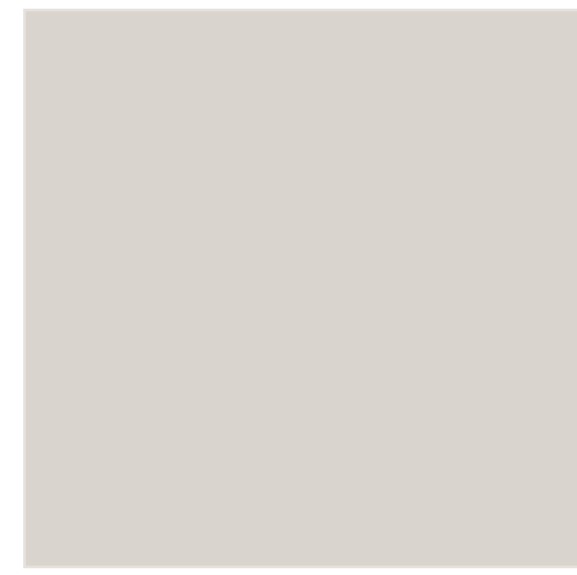
TO PLATE 22'-0"

2ND FLOOR 10'-6"

1ST FLOOR 0'-0"

Scale: 1/8" = 1'-0"

00 8 16 32



1. CEMENT PLASTER - BEIGE



2. CEMENT PLASTER - DARK GREY



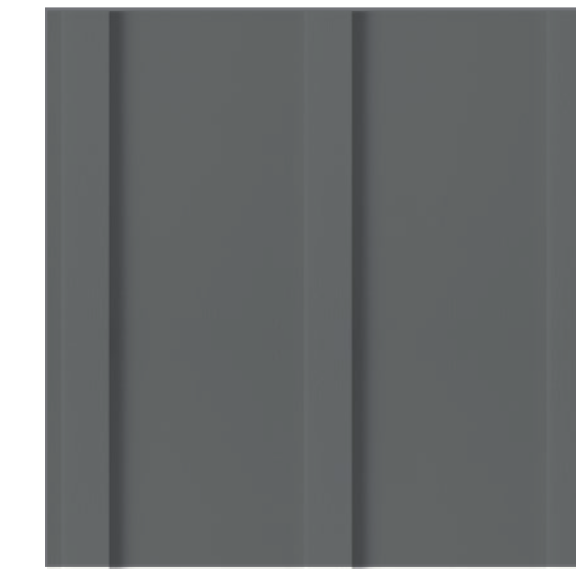
3. CEMENT PLASTER - SLATE GREY



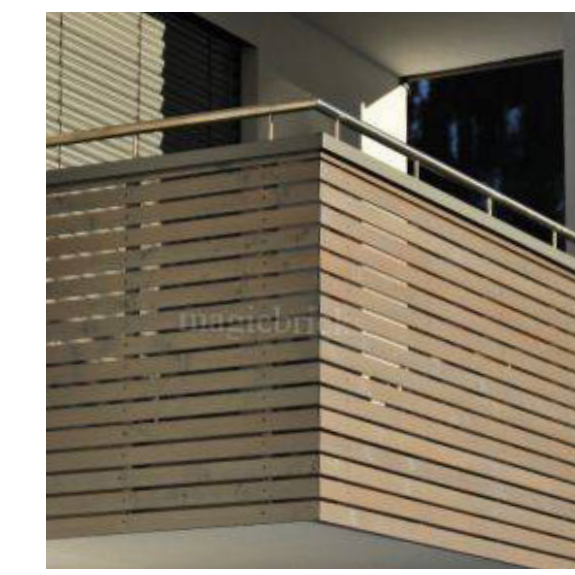
4. BEIGE BOARD & BATTEN



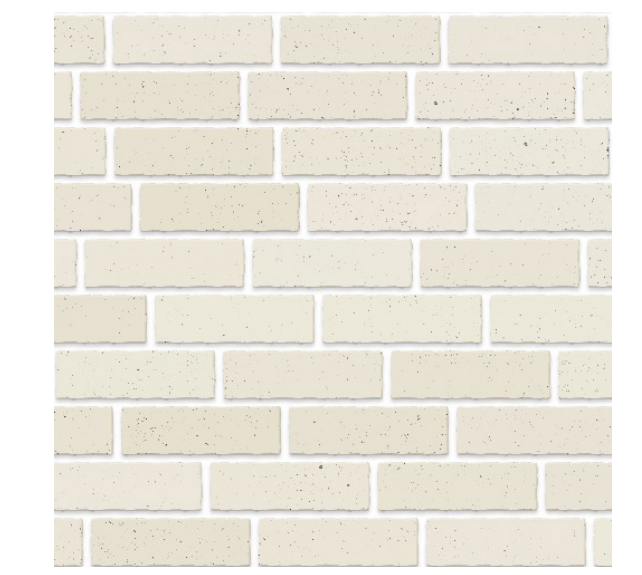
5. SLATE GREY BOARD & BATTEN



6. DARK GREY BOARD & BATTEN



7. FACE-MOUNTED PAINTED LOUVRE RAILINGS



8. BEIGE BRICK RUNNING BOND



4. FRONT ELEVATION



2. SIDE ELEVATION

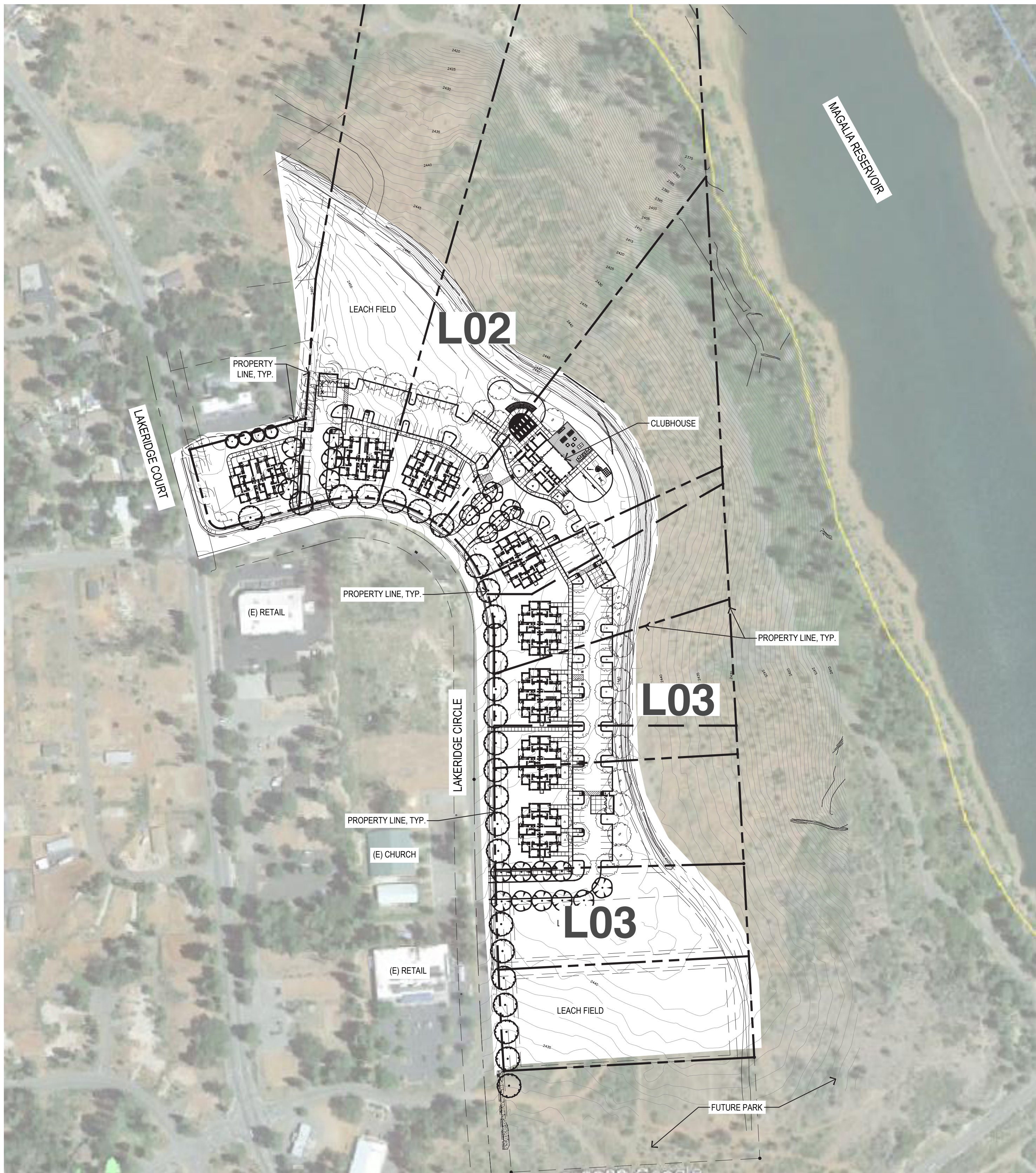


3. BACK ELEVATION



1. SIDE ELEVATION

Scale: 1/8" = 1'-0"



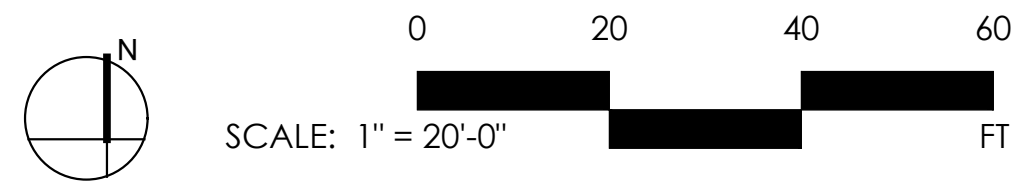
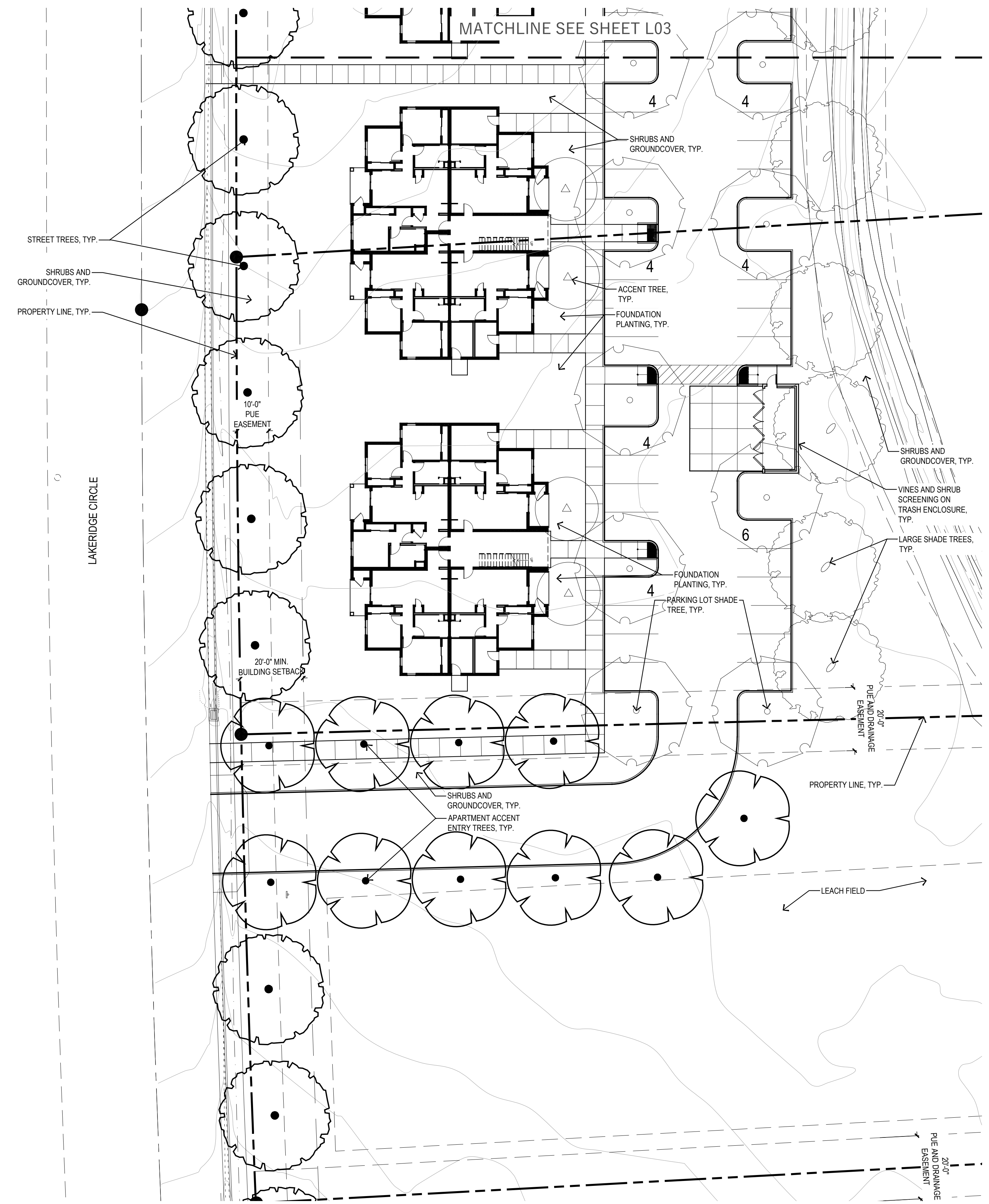
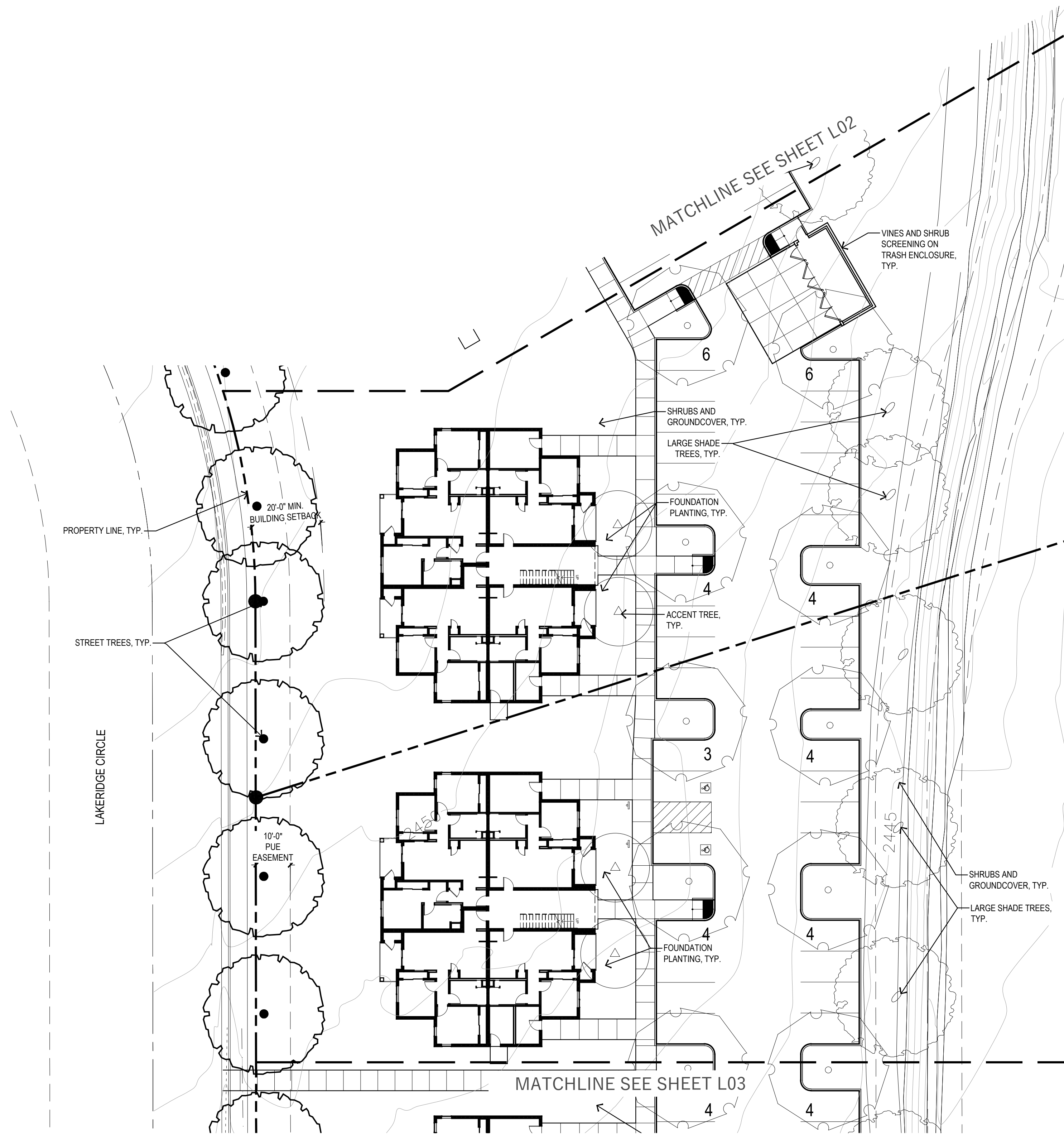
OVERALL LANDSCAPE PLAN
1" = 100'-0" 2

PLANT SCHEDULE

TREES	BOTANICAL / COMMON NAME	CONT	WATER USE	GROUND COVERS	BOTANICAL / COMMON NAME	CONT	WATER USE
	<i>Arbutus 'Marina'</i> Marina Strawberry Tree	15 gal	Low		<i>Arctostaphylos</i> x 'Emerald Carpet' Emerald Carpet Manzanita	1 gal	Low
	<i>Cercis occidentalis</i> Western Redbud Multi-trunk	15 gal	Low		<i>Festuca glauca</i> 'Boulder Blue' Boulder Blue Fescue	1 gal	Low
	<i>Pinus halepensis</i> Aleppo Pine	24"box	Low		<i>Juniperus horizontalis</i> Creeping Juniper	1 gal	Low
	<i>Pistacia chinensis</i> 'Keith Davey' Keith Davey Chinese Pistache	24"box	Low		<i>Myoporum parvifolium</i> Trailing Myoporum	1 gal	Low
	<i>Platanus racemosa</i> California Sycamore	24"box	Low		<i>Rosmarinus officinalis</i> 'Huntington Carpet' Huntington Carpet Rosemary	1 gal	Low
	<i>Quercus lobata</i> Valley Oak	24"box	Low		<i>Zauschneria californica</i> California Fuchsia	1 gal	Low
	<i>Zelkova serrata</i> 'Village Green' Village Green Japanese Zelkova	24"box	Low				
SHRUBS	BOTANICAL / COMMON NAME	CONT	WATER USE				
	<i>Calamagrostis</i> x <i>acutiflora</i> 'Karl Foerster' Karl Foerster Feather Reed Grass	5 gal	Low				
	<i>Cistus</i> x 'Anne Palmer' Anne Palmer Rockrose	5 gal	Low				
	<i>Dianella revoluta</i> Spreading Flax Lily	1 gal	Low				
	<i>Dietsa bicolor</i> Fortnight Lily	5 gal	Low				
	<i>Hesperaloe parviflora</i> Red Yucca	5 gal	Low				
	<i>Kniphofia uvaria</i> 'Flamenco' Flamenco Red Hot Poker	5 gal	Low				
	<i>Lomandra longifolia</i> Mat Rush	1 gal	High				
	<i>Loropetalum chinense rubrum</i> 'Chang Nian Hong' Ever Red® Fringe Flower	5 gal	Low				
	<i>Muhlenbergia rigens</i> Deer Grass	5 gal	Low				
	<i>Nandina domestica</i> 'AKA' Blush Pink™ Heavenly Bamboo	5 gal	Low				
	<i>Punica granatum</i> 'Nana' Dwarf Pomegranate	5 gal	Low				
	<i>Rhamnus californica</i> California Coffeeberry	5 gal	Low				
	<i>Salvia clevelandii</i> Cleveland Sage	5 gal	Low				

PRELIMINARY PLANT SCHEDULE
NTS 1





PARTIAL LANDSCAPE PLAN

MAGALIA APARTMENTS | Magalia, CA

03

PROJECT NO. 1425-0001

October 03, 2022